



COMMUNITY IMPACT REPORT 2022



FROM THE CEO



Dear Link Community,

I am so proud of the incredible progress we have made together in the past year. With the support of our youth, staff, and community, The Link has remained steadfast in our work to end youth homelessness and sexual exploitation, and reform the juvenile justice system. **Together, we have provided emergency shelter, housing, and supportive services to nearly 2,000 Twin Cities Metro youth.**

One of the most significant milestones of 2022 was our investment in youth leaders. While The Link has been co-led by youth for more than a decade, we are thrilled to have created a Youth Engagement Program to offer young people even more meaningful opportunities to share their voices and step into their power as leaders.

We know each of these young people have bright futures ahead as leaders and role models within their families, The Link, and our community.

The Link also expanded our mental health support for youth through our FOCUS Mental Health Program. Young people named it FOCUS (Finding Our Care Under Support) with the tagline “A Guided Path to Healing”. This year, The Link has had the privilege of working with a Black owned mental health practice to offer onsite individual and group therapy designed to meet the needs of youth who have experienced trauma and social injustice.

Our dedicated staff, community partners, and generous supporters have been instrumental in making all of this possible. As we look forward to 2023, we are hopeful and committed to continuing our work together, guided by the strength and vision of our youth.

Beth Holger

Beth Holger
CEO

BOARD OF DIRECTORS

Jamar Hardy, Chair
Edina Realty

David Behrens
Graco

Tovi Nelson
Keller Williams

Jason Marvin, Vice Chair
Boeckermann, Graftstrom, &
Mayer, LLC

Sara Durhman
Mall of America

Arianna Orcutt
PNC Bank

Michael O'Neil, Treasurer
Target

Kendra Garrett, Ph.D.
St. Catherine University/
University of St. Thomas

Christen Purdy
Choice Bank

Matt Amendola
General Mills

Jade Jorgenson
Fredrikson & Byron, P.A.

RaeShondra Walker
Former Client, MSW

Tom Arneson
Hennepin County Attorney's
Office Juvenile Division

Craig A. Kepler
Best & Flanagan LLP

Christine Young
Retired- Choice Bank

FINANCIALS

REVENUES AND SUPPORT

Community Giving	\$734,289
Corporations & Foundations	1,612,986
Government Contracts	8,754,737
In-Kind Contributions	395,186
Events, Net	301,246
Other	(48,856)
Total Revenue & Support:	\$11,700,714

EXPENSES

Program Services	\$9,941,190
Management & General	1,674,771
Marketing & Development	602,634
Total Expenses:	\$12,218,595
Total Change in Net Assets:	\$(517,881)

ASSETS

Cash & Cash Equivalents	\$3,379,291
Contracts & Grants Receivable	1,576,556
Property & Equipment, Net	932,865
Other Assets	319,722
Total Assets:	\$6,208,434

LIABILITIES

Current Liabilities	\$1,180,805
Long-Term Liabilities, Net	54,973
Total Net Assets	
Total Liabilities & Net Assets:	\$4,972,656

Due to the recent change to the Revenue Recognition standard, The Link was required to recognize significant multi-year grant revenue in the year received.. The "deficit" reflected is the amount released for this multi-year grant during the fiscal year.



“MAYBE IT’S MY TIME TO WIN NOW”

“Before working with Northside Prevention, my life was not stable at all. I slept wherever I could and it made me feel very hopeless. Trying to finish school and being homeless felt like an impossible task, but my counselor was able to get me connected with The Link’s Northside Homeless Prevention Program.

I started working with the housing team and they were able to help me find an apartment. When I received the call that my application was accepted, I was so happy because good things do not often happen to me.

I have been in my apartment for 2 months now and I am just starting to feel like I can rest because I was homeless for a very long time. I also was able to finish high school and get my diploma, so maybe it’s my time to win now. The Link has helped me so much, I am now able to have housing and work on goals I have for myself”.

-Youth at The Link

MISSION

The Link works with youth and families to overcome the impacts of poverty and social injustice.

EDI COMMITMENT

The Link will promote ongoing learning to better serve youth and families, broaden staff knowledgebase and cultural awareness/competence resulting in equity, diversity and inclusion visible at all levels of the organization. the impacts of poverty and social injustice.

YOUTH PROGRAMS

The Link operates 28 programs across three divisions designed to meet the needs of youth experiencing homelessness, sexual exploitation, and/or involvement in the juvenile justice or foster care systems.



HOUSING



SAFE HARBOR



YOUTH ADVOCACY

WHO WE SERVE

1,885

youth and young families
ages 10-24 across The
Link's three divisions

84%

of youth at The Link identify
as Black, Indigenous, and
People of Color (BIPOC)

158

dependent children of
participants were supported
through The Link's programs



HOUSING

Partnering with youth and families to exit homelessness and build positive futures



Street Outreach

1,500+ youth contacts

by street outreach workers who provide basic needs supplies, transportation resources, and connections to housing for youth experiencing homelessness.



Drop-In Center

350+ youth visits

to CORE Drop-In Center to access basic needs resources, connections to housing, and case management.



Emergency Shelter

20 units of emergency shelter

for minor age youth and 18-24 year olds experiencing homelessness.



Supportive Housing

260+ units of housing

and supportive services provided to youth ages 16-24 across the Twin Cities Metro. The Link offers programs tailored to meet the needs of:

- LGBTQIA+ youth and families
- Parenting youth
- Youth with disabilities
- Black youth and families in North Minneapolis
- Foster care youth
- Suburban youth and families

"It is amazing how housing stability and support can change your whole outlook on the world."

- Youth at The Link

The Housing Division is co-led by youth on The Link's Housing Committee

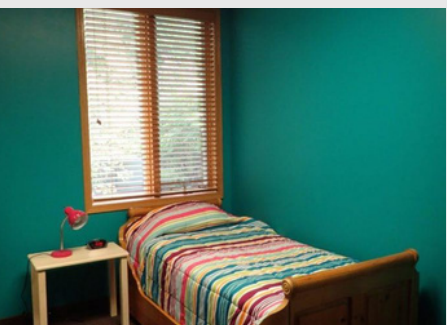


Supporting survivors
as they build bright
futures free from
exploitation

SAFE HARBOR



"The Link made me feel like a person even when everyone around rejected me, pushed me away, or didn't want me around - they made me welcomed in every way. They always encouraged me to keep going and to fight no matter what is going on."
- Youth at The Link



Passageways

6 emergency shelter units

and 24/7 onsite supportive services for youth ages 12-17 who are experiencing sexual exploitation or trafficking.

15 housing units

and ongoing case management for youth survivors ages 16-24 and their dependent children.



Supportive Services

The Link provides wraparound services to holistically meet the needs of sexually exploited youth including a 24/7 crisis response, dedicated support during interactions with law enforcement, aftercare, and family reunification counseling.

The Safe Harbor Division is co-
led by The Link's Survivor
Advisory Committee



YOUTH ADVOCACY



Creating positive pathways for justice-involved youth



Case Management

412 youth participants

engaged in intensive case management. The Link offers programs that support youth ages 13-24 as they re-engage in school, complete probation and more. Working with a case manager, youth build healthy relationships, access employment resources, and pursue their goals.

"I know I needed someone with integrity in my youthfulness and I try to be that person. Being someone of trust. I needed that as a youth and it wasn't there.

I try to be that person of trust and truth for a youth."

- Stevan, Case Manager

93%

of female-identifying youth on probation in our POWER Program **did not reoffend** within 2 years

86%

of youth entering the Youth Connection Center **did not reoffend** within six months of completing case management



School Matters

456 students

experiencing truancy offered resources and case management through School Matters

The Youth Advisory Division is co-led by youth on The Link's RILE (Rooted in Lived Experience) Advisory Committee